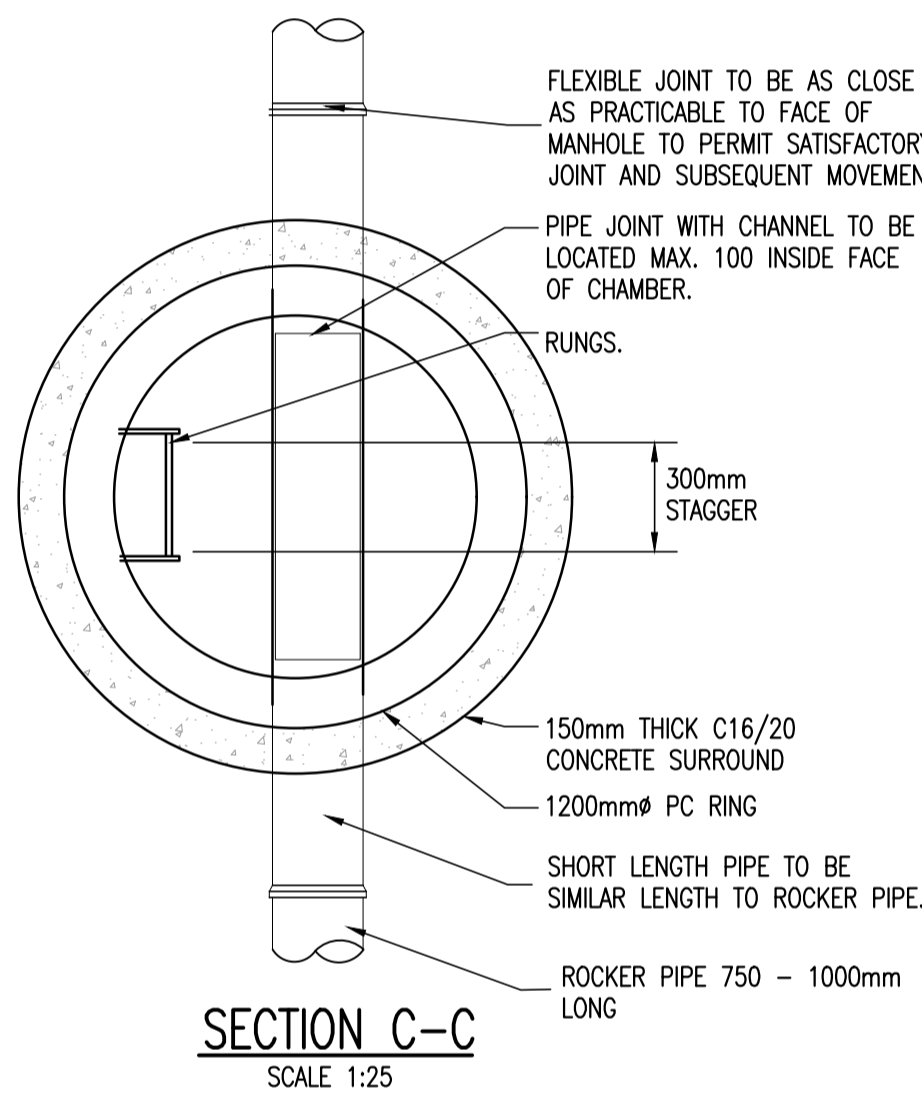
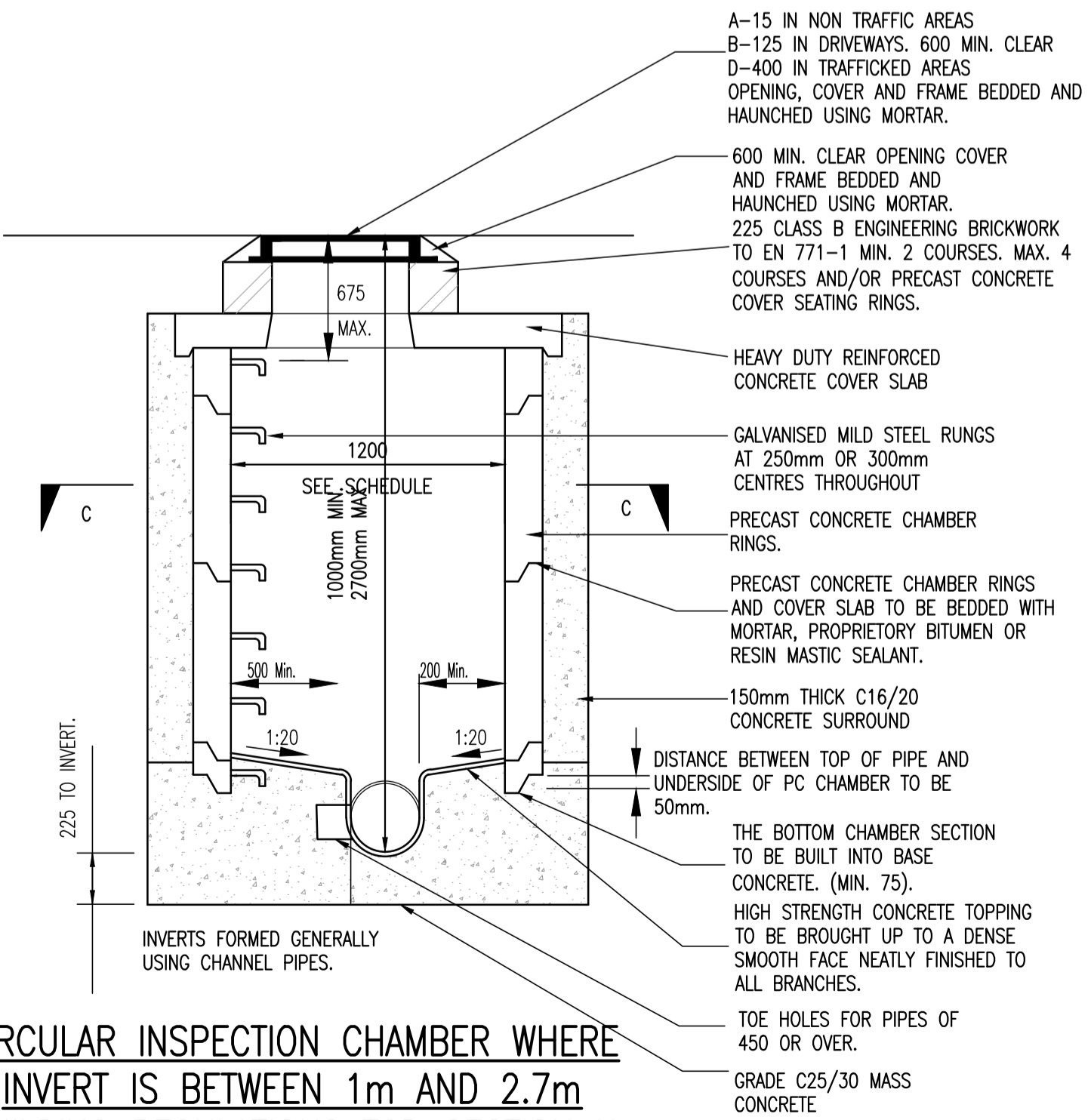


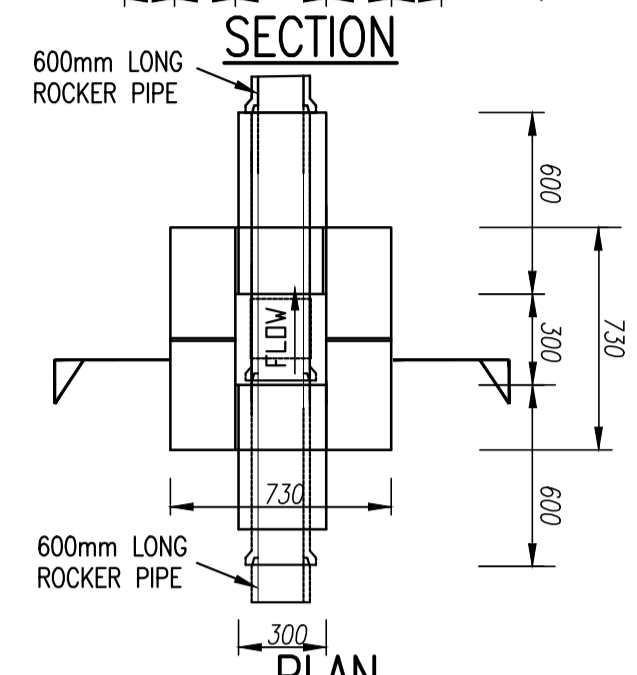
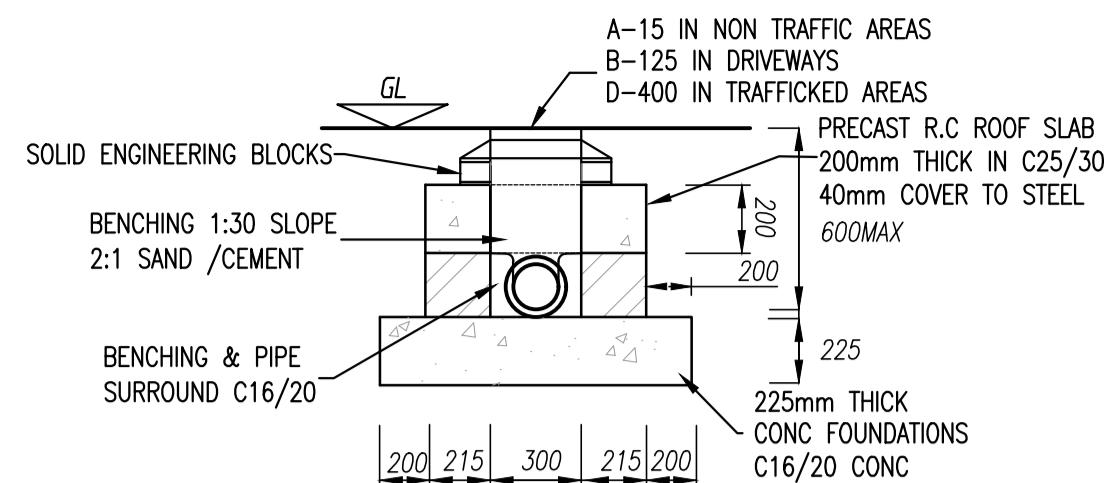
**PLAN**  
CIRCULAR INSPECTION CHAMBER WHERE  
INVERT IS 0.6m OR LESS BUILDING  
REGULATIONS TGD SECTION H TABLE 9  
SCALE 1:25



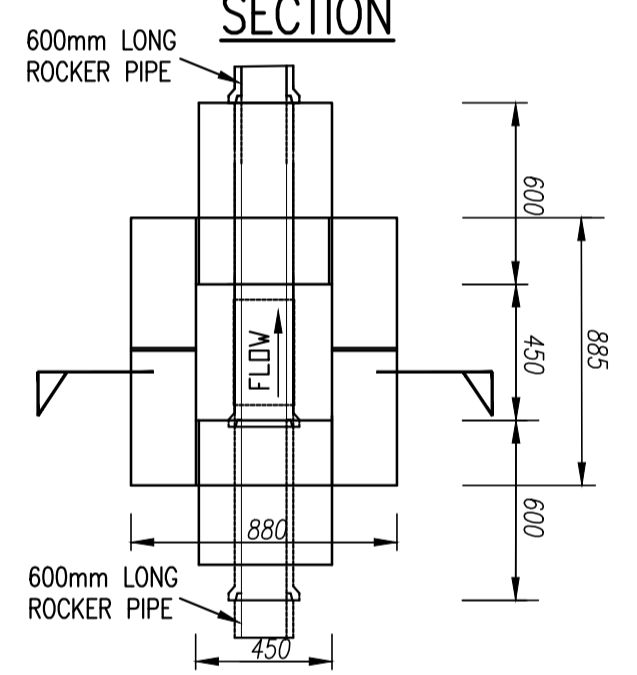
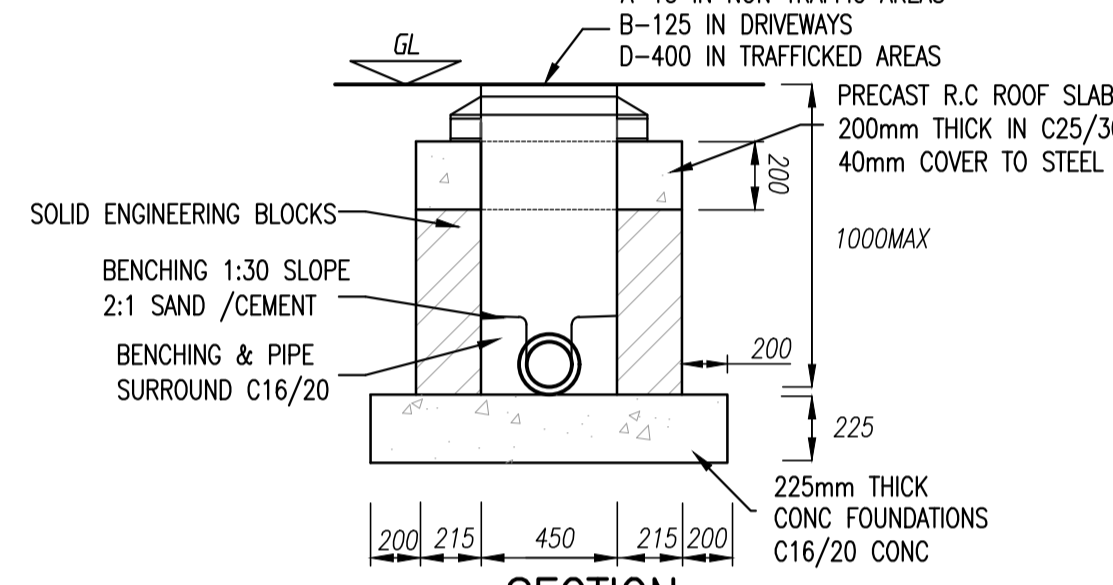
**SECTION C-C**  
SCALE 1:25



**CIRCULAR INSPECTION CHAMBER WHERE  
INVERT IS BETWEEN 1m AND 2.7m  
BUILDING REGULATIONS TGD SECTION H  
TABLE 9**  
SCALE 1:25



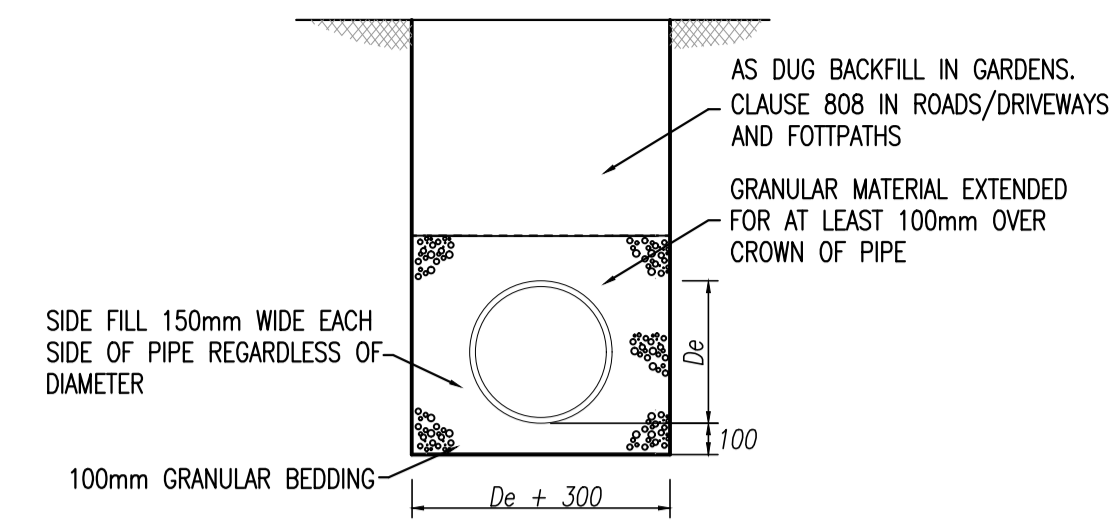
**INSPECTION CHAMBER WHERE INVERT IS 0.6m OR LESS  
BUILDING REGULATIONS TGD SECTION H TABLE 9**  
SCALE 1:25



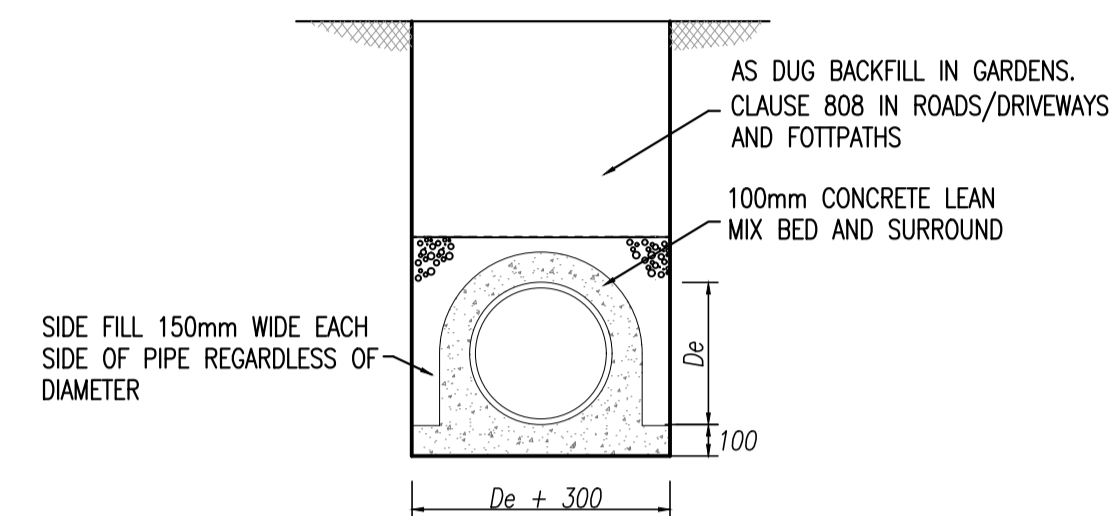
**INSPECTION CHAMBER WHERE INVERT IS  
1m OR LESS BUILDING REGULATIONS  
TGD SECTION H TABLE 9**

TABLE 9 Minimum dimensions for access fitting and chambers					
Type	Depth to (m)	Internal Sizes		Cover Sizes	
		length x width (mm x mm)	Circular (mm)	length x width (mm x mm)	Circular (mm)
Rodding eye					
Access Fitting					
small	0.6 or less	150 x 100	150	150 x 100	150
large		300 x 100	-	300 x 100	-
Inspection Chamber	0.6 or less	300 x 300	190*	300 x 300	190*
	1.0 or less	450 x 450	450	450 x 450	450**
Manhole	1.5 or less	1200 x 750	1000	600 x 600	600
	over 1.5	1200 x 750	1200	600 x 600	600
	over 2.7	1200 x 840	1200	600 x 600	600
Shaft	over 2.7	900 x 840	900	600 x 600	600

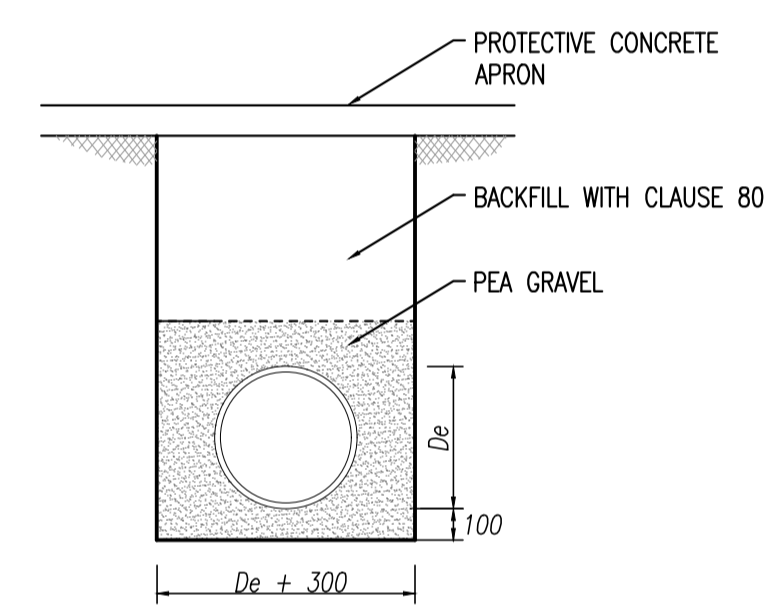
Note:  
\* For clayware or plastics may be reduced to 430mm in order to provide support for cover and frame  
\*\* Drains up to 150mm



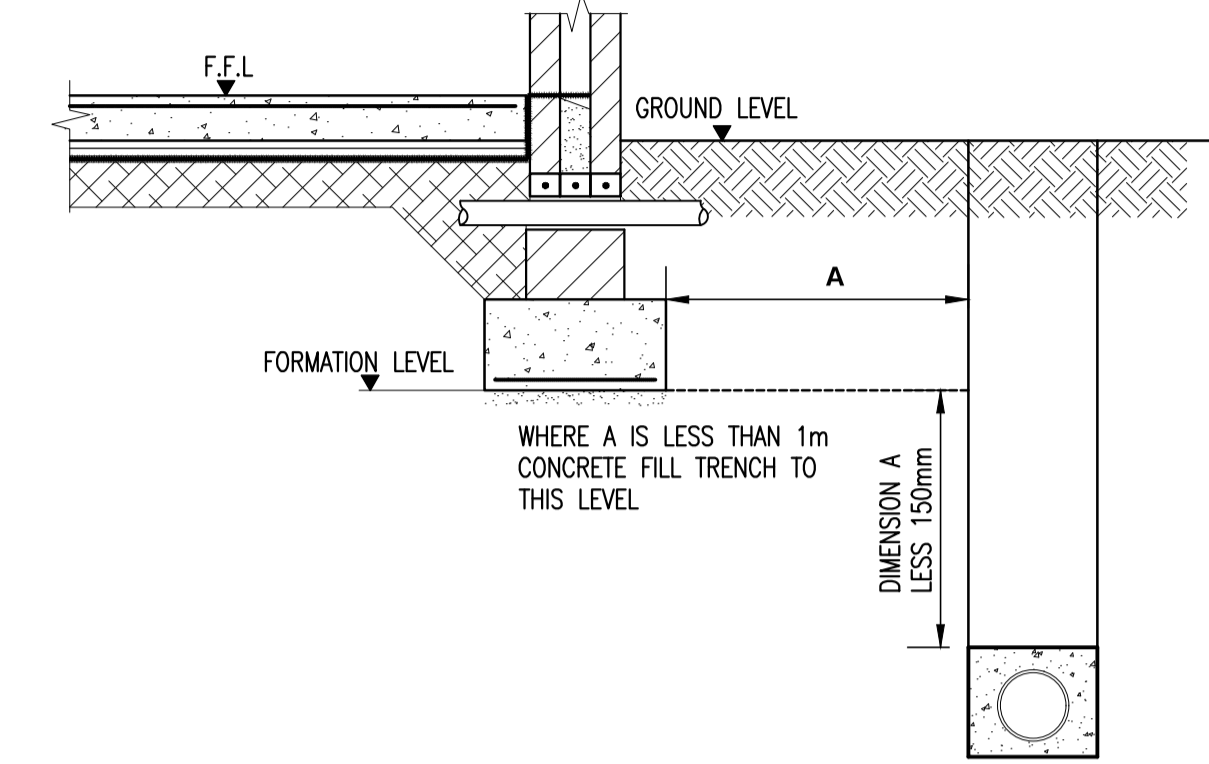
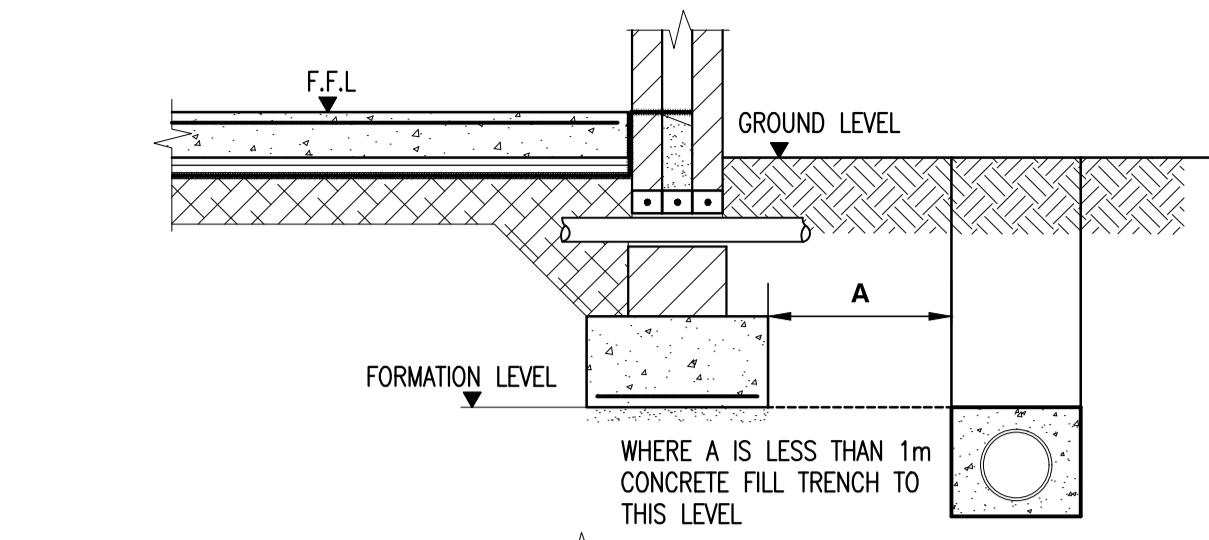
**PIPES BEDDED IN GRANULAR MATERIAL  
COVER > 0.9m IN ROADS  
COVER > 0.6m IN GARDENS**  
SCALE 1:25



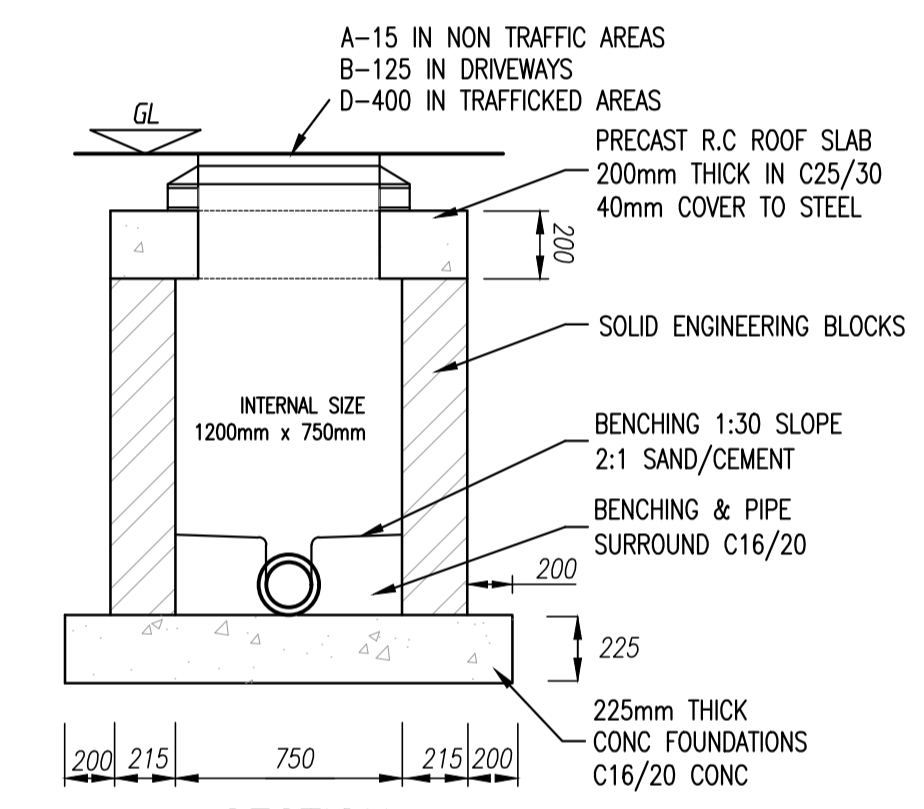
**PIPES BEDDED IN GRANULAR MATERIAL  
COVER < 0.9m IN ROADS  
COVER < 0.6m IN GARDENS**  
SCALE 1:25



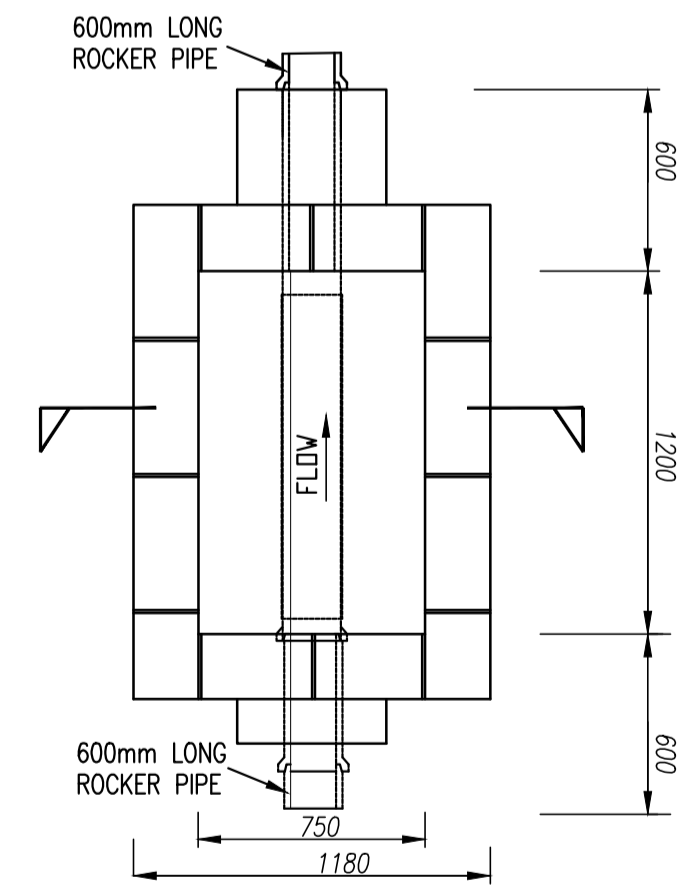
**PIPES BEDDING ALTERNATIVE DETAIL  
COVER < 0.9m IN ROADS  
COVER < 0.6m IN GARDENS**  
SCALE 1:25



**TYPICAL DETAIL WHERE PIPE RUNS NEAR BUILDINGS**  
SCALE 1:25

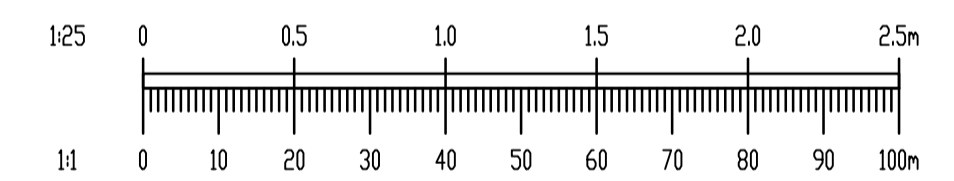


**SECTION**



**INSPECTION CHAMBER DEPTH TO INVERT IS  
BETWEEN 1m AND 2.7m BUILDING REGULATIONS  
TGD SECTION H TABLE 9**  
SCALE 1:25

- NOTES:
- DO NOT SCALE. USE FIGURED DIMENSIONS ONLY.
  - THIS DRAWING IS TO BE READ IN CONJUNCTION WITH ALL OTHER RELEVANT ARCHITECTURAL AND ENGINEERING DRAWINGS.
  - ALL WORKS TO BE CARRIED OUT IN ACCORDANCE WITH THE REQUIREMENTS OF THE BUILDING REGULATIONS 2010 SECTION H "DRAINAGE AND WASTE WATER DISPOSAL" AND WITH LOCAL AUTHORITY REQUIREMENTS
  - ANY ALTERNATIVE DETAILS PROPOSED BY THE CONTRACTOR SHALL BE SUBMITTED TO THE ENGINEER AT LEAST 2 WEEKS PRIOR TO THE CONSTRUCTION OF THE DRAIN
  - MINIMUM SPACING OF ACCESS POINTS TO BE IN ACCORDANCE WITH BUILDING REGULATIONS TECHNICAL GUIDANCE DOCUMENT SECTION 4 TABLE 10
  - DETAILS OF MATERIALS FOR CONSTRUCTION REFER TO BUILDING REGULATIONS TECHNICAL GUIDANCE DOCUMENT SECTION 4 TABLE 11
  - BACKFILL OF ALL INSPECTION CHAMBERS TO BE 808 BACKFILL IN 200mm LAYERS
  - INSTALLATION OF PLASTIC PIPES AND FITTINGS, GULLIES, AJS ETC TO BE STRICTLY IN ACCORDANCE WITH MANUFACTURERS INSTRUCTIONS



10/03/22	AN BORD PLEANALA SUBMISSION	PW	EC
REV. DATE	AMENDMENT	DRN	APPD

STATUS **FOR PLANNING ONLY  
NOT FOR CONSTRUCTION**

**Waterman Moylan**  
Engineering Consultants  
BLOCK 8, EASTPOINT BUSINESS PARK, ALFIE BYRNE ROAD, DUBLIN D03 H3F4 IRELAND.  
Tel: (01) 864 8900 Fax: (01) 661 3618  
Email: info@waterman-moylan.ie www.waterman-moylan.ie

CLIENT **CAIRN HOMES PROPERTIES LTD.**  
ARCHITECT **MCORM ARCHITECTS**

PROJECT **SHD AT HOLYBANKS, SWORDS**

TITLE **PRIVATE SURFACE WATER DRAINAGE DETAILS**

DRAWN <b>PW</b>	DESIGNED <b>LRG</b>	APPROVED <b>EC</b>	DATE <b>MARCH 2022</b>
SCALE <b>AS SHOWN@1</b>	JOB NO. <b>17-088</b>	DRG. NO. <b>P231</b>	REVISION